



Miniature 1/3" Type CCD Analog Monochrome
Camera for Factory Automation and Inspection



Key Features

COMPACT DIMENSIONS make the CS8420i camera ideal for space-sensitive industrial vision applications. It measure 31 x 29 x 70mm and weigh only 80g

ELECTRONIC SHUTTER enables the CS8420i to capture fast moving subjects in factory automation, assembly, machine vision and inspection. Shutter is selectable from 1/60s to 1/10000s

1/3" TYPE INTERLINE CCD delivers 768(H) x 494(V) active pixels for 570 TV Line resolution

EXTERNAL SYNC SYSTEM with automatic changeover

ECONOMICAL without compromising excellent performance

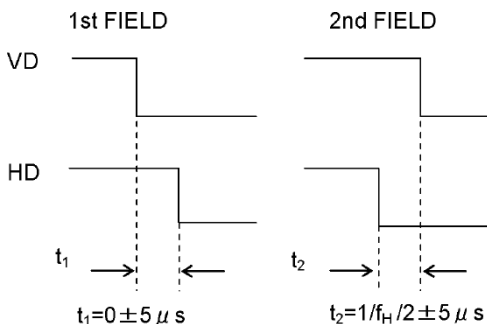
CS8430i

SPECIFICATIONS

TV System	EIA
Image Sensor	Interline CCD
Active pixel	768(H) x 494(V)
Chip size	6.35 μm x 7.4 μm
Active image area	4.8mm(H) x 3.6mm(V) (equivalent to 1/3" normal optical image size respectively)
Number of scanning lines	525 lines
Scanning system	2:1 interlace
Sync system	Internal/External(Automatic change over)
Scanning frequencies	
Horizontal drive (H)	15.734 kHz
Vertical drive (V)	59.94Hz
Aspect ratio	4 : 3
Sensitivity	
Standard :	100 lx at F5.6
Minimum	0.3 lx at F1.4
Video output	VS(Video + SYNC) : 1.0V(p-p)/75 Ω
Resolution	Horizontal direction : 570 TV lines Vertical direction : 485 TV lines (350 TV lines)
S/N Ratio	56dB
Gamma correction	1.0
Input Signal	
HD,VD and SYNC	4.0±2.0 V(p-p)
VS	1.0 V(p-p)(SYNC 0.3V(p-p))
Input impedance	75Ω/HIGH selection can be made using the internal switch
Pulse polarity	Negative polarity
Pulse width	HD : 6.4±3 μsec VD : 150 to 800 μsec
Frequency	Horizontal(f_H) : 15.734 kHz±2% Vertical(f_V) : $2f_H/525$
Number of scanning lines	525 lines
Output Signal	
Pulse level	4.5V(p-p) / not impedance
Interlace	2:1
Polarity	Negative
Pulse width	HD : 6.36±0.1 μsec VD : 572±1 μsec
Frequency	Horizontal(f_H) : 15.73426 kHz±100ppm Vertical(f_V) : $2f_H/525$
Number of scanning lines	525 lines
Electronic shutter	ON/OFF selectable Shutter speed 1/60, 1/100, 1/250, 1/500, 1/1000, 1/2000, 1/4000, 1/10000 sec.
Power source	DC12V±10% within 10mV(p-p) ripple
Power consumption	approx. 210mA
Ambient condition	0°C to 40°C, Humidity less than 90%
Lens mount	C-mount
Dimensions	31(W)mm x 29(H)mm x 70(D) mm
Weight	approx. 80 g

Phase Between HD/VD

The phase relations between HD and VD should be as shown:

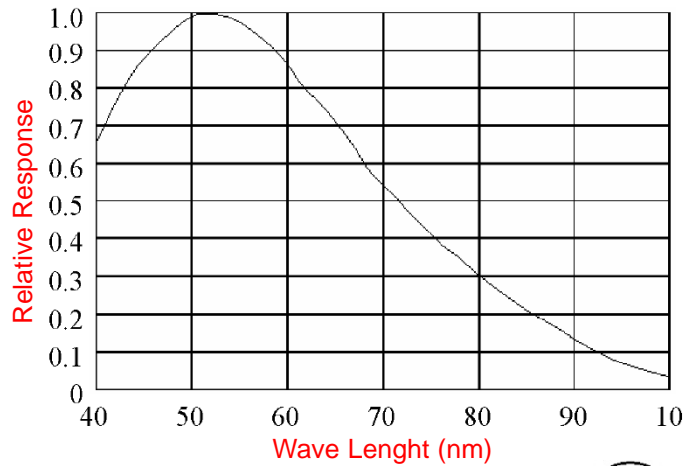


Typical Applications

Video image capture applications for the CS8420i include high-speed machine vision, inspection, factory automation, quality control, positioning and many others.

Typical Spectral Response

(lens characteristics and light source is not reflected in table)

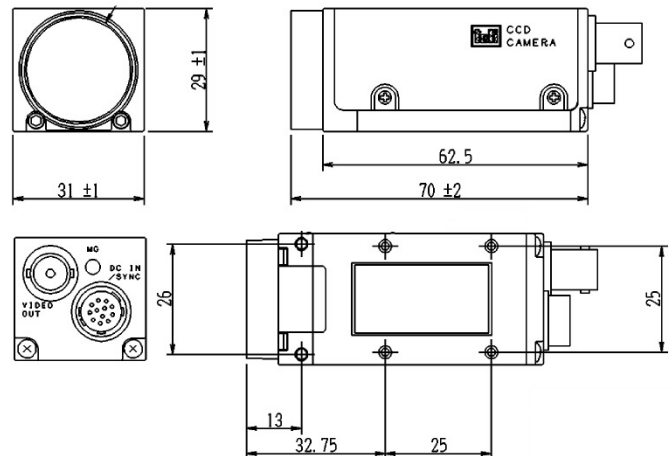


DC IN/SYNC CONNECTOR ASSIGNMENT

Camera Connector: HR10A-10P-12P (Hirose Denki)



PIN NO.	EXTERNAL SYNCHRONIZATION		INTERNAL SYNCHRONIZATION
	HD AND VD	VS/SYNC	
1	GND	GND	GND
2	+12V	+12V	+12V
3	Video output (GND)	Video output (GND)	Video output (GND)
4	Video output (signal)	Video output (signal)	Video output (signal)
5	HD input (GND)		HD output (GND)
6	HD input (signal)		HD output (signal)
7	VD input (signal)	VS/SYNC input (signal)	VD output (signal)
8			
9			
10	GND	GND	GND
11	+12V	+12V	+12V
12	VD input (GND)	VS/SYNC (GND)	VD output (GND)



TOSHIBA TELI CORPORATION
 7-1, 4-chome Asahigaoka
 Hino-shi, Toyko 191-0065 Japan
 TEL: +81-042-589-8771
 FAX: +81-042-589-8774
 www.toshiba-teli.co.jp

TOSHIBA TELI AMERICA, INC.
 33 Hammond, Suite 211
 Irvine, California 92618 USA
 TEL: +1-949-770-TELI(8354)
 FAX: +1-949-206-0210
 www.toshiba-teli.com

